

## WHAT DO WE COVER?

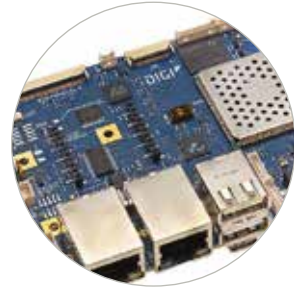
In a rapidly evolving industry, engineers need highly technical and relevant content on the topics and trends that impact their jobs.

## HOW DO WE COVER IT?

From articles, eBooks, and research, to videos, graphics, and social media, Electronic Design covers the industry leveraging every essential platform.

## WHY IS IT IMPORTANT?

When we match the right content, at the right time, to the right audience, we ensure the most optimized and engaging information engineers have to read to stay on top of the industry.



### Embedded Revolution

- Boards and Modules
- Storage, SmartNICs
- Display Technology
- Industry 4.0
- Vision and Imaging



### Digital Technology

- Processors Architectures
- Security Hardware
- FPGA Technology
- GPU and GPGU Computing
- Accelerators: Network, Machine Learning, etc.



### Analog Technology

- Amplifiers and Op Amps
- Sensors
- Converters
- MEMS Technology
- Timing



### Power

- Power Supply, Storage, and Batteries
- High-Power Circuits, SiC, GaN
- Power Conversion
- Power Management
- Energy Harvesting



### Communications

- 4G, 5G, 6G, Wi Fi
- IoT Protocols and Frameworks
- Ethernet, Fiber Optics
- Fabrics
- Interfacing: USB, MIPI, I3C



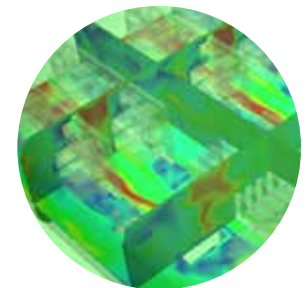
### Test and Measurement

- Oscilloscopes
- Analyzers: Signal/Spectrum/Logic/Vector Network
- Digital Data Acquisition
- Test Systems and Standards



### Embedded Software

- Machine Learning
- Security and Encryption
- Operating Systems, Containers, and Hypervisors
- Software Development Tools



### EDA and Life Cycle

- PCB Technology
- Life Cycle Management
- CAD and Physical Simulation
- Chip Design
- Thermal Design

# MAGAZINE ADVERTISING SPECS

ElectronicDesign.

[ View our **MAGAZINE ARCHIVE** ] 

DIMENSIONS (inches)	Non Bleed	Trim (please extend bleed .125" beyond trim size, all edges)
Full Page	7 x 10	7.5 x 10.5

## EMAIL PRINT ADVERTISING SUBMISSIONS TO:

Deanna O'Byrne  
[dobyrne@endeavorb2b.com](mailto:dobyrne@endeavorb2b.com)

### Cancellations:

Cancellations must be submitted in writing and will not be accepted after the published ad material deadline. Cover positions cannot be canceled. Verbal cancellations will not be accepted.

## PRINT DUE DATES/ SHOW COVERAGE

### JAN/FEB

**AD CLOSE:** 1/2/24

**MATERIAL DUE:** 1/10/24

### MAR/APR

**AD CLOSE:** 3/6/24

**MATERIAL DUE:** 3/14/24

### MAY/JUN

**AD CLOSE:** 5/7/24

**MATERIAL DUE:** 5/15/24

### JUL/AUG

**AD CLOSE:** 7/10/24

**MATERIAL DUE:** 7/18/24

### SEP/OCT

**AD CLOSE:** 9/11/24

**MATERIAL DUE:** 9/19/24

### NOV/DEC

**AD CLOSE:** 11/4/24

**MATERIAL DUE:** 11/12/24

### INNOVATORS IN ELECTRONIC DESIGN

**AD CLOSE:** 11/18/24

**MATERIAL DUE:** 11/26/24

**SHOW DISTRIBUTION:** DesignCon, APEC, IMS, DAC, Electronica

PLEASE SEND YOUR AD NO LATER THAN THE MATERIAL DUE DATE ON THE EDITORIAL CALENDAR

### Creative Specifications

- File type: PDFx1a (300 dpi or less, yet greater than 151dpi)
- Convert all spot colors to CMYK
- If using Roboto font, please convert to outlines
- Ads with bleed – extend bleed 0.125 inches beyond the trim; include printer's marks, all edges
- All live matter not intended to bleed should be kept 0.25 inch from trim. Spread ads should allow a total of 0.1875 inch safety in gutter.